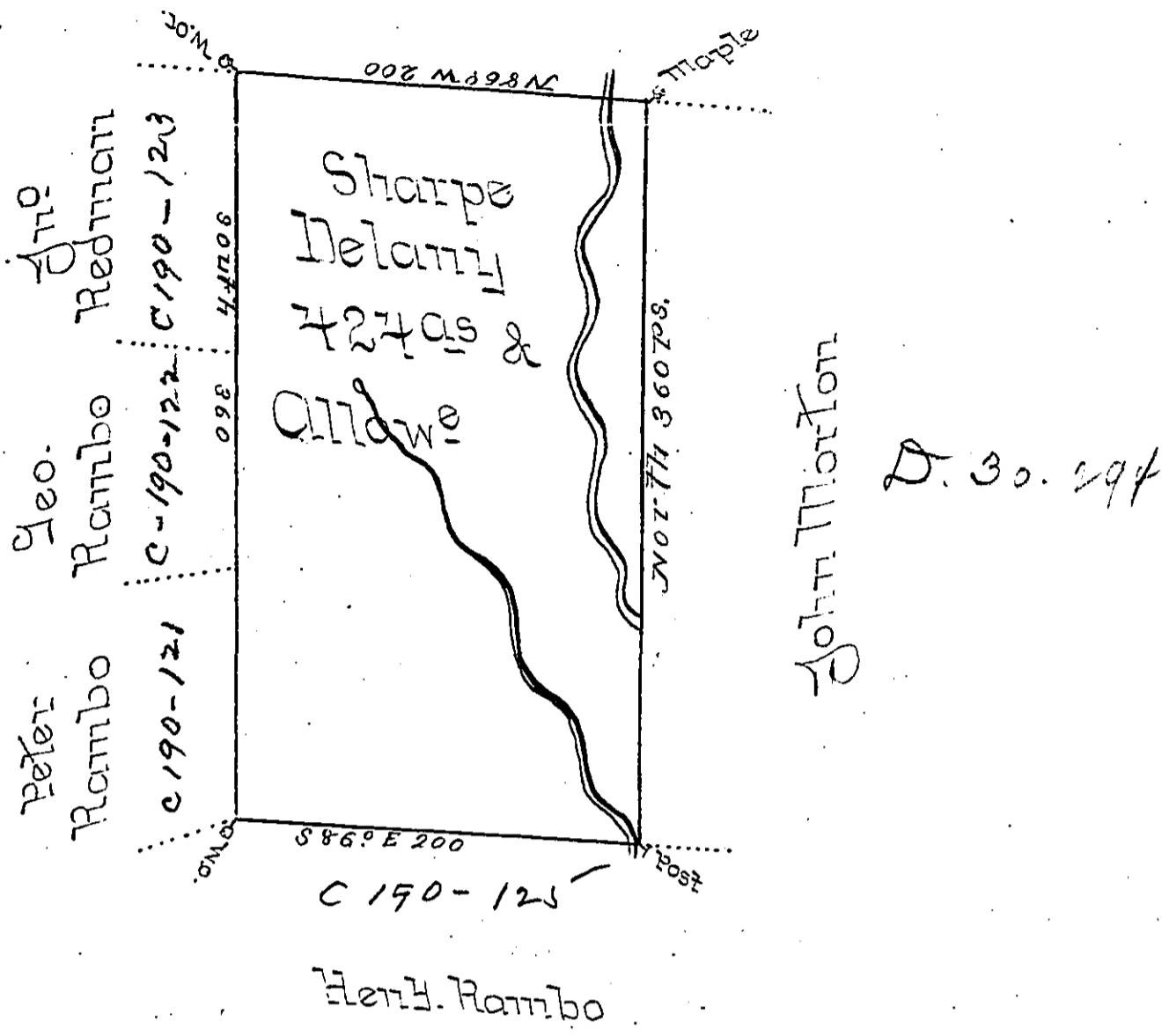


State of New York



A draught of a tract of Land Called _____ situate Join-
 the New York Line & land survd for John Morton ob.
 others in Northumberland County Containing four
 Hundred & Twenty four Acres & Allowe of six P Cent
 for Roads survd for Sharpe Delany the 6th Day of Sept^r
 1784. in Pursuance of a Warrant Dated the 2^d Day of
 July 1784

by Wm Gray D.S.

To John Lukens Esq^r }
 Survd Gen^l - }

IN TESTIMONY that the above is a copy of the original remaining on file in
 the Department of Internal Affairs of Pennsylvania, made
 conformably to an Act of Assembly approved the 16th day of
 February, 1833, I have hereunto set my Hand and caused
 the Seal of said Department to be affixed at Harrisburg,
 this seventh day of June 1898.

James W. Patta
 Secretary of Internal Affairs.